



Setting up the WPS as an Multiple Module Eclipse Project -Walkthrough-

1. Download the latest Eclipse Version
(<http://www.eclipse.org/downloads/>)
2. Install Maven2
(<http://maven.apache.org/download.html>)

Unzip maven-2.0.3-bin.zip to the directory you wish to install Maven 2.0.3. These instructions assume you chose C:\Program Files\Apache Software Foundation\maven-2.0.3

Add the bin directory to your path, by opening up the system properties (WinKey + Pause), selecting the "Advanced" tab, and the "Environment Variables" button, then editing the PATH variable in the user variables. eg. "C:\Program Files\Apache Software Foundation\maven-2.0.3\bin"; %PATH%

In the same dialog, make sure that JAVA_HOME is set to the location of your JDK, eg. C:\Program Files\Java\jdk1.5.0_02

Run `mvn --version` to verify that it is correctly installed.

Run `mvn` to generate the local repository. (You will see some errors, but don't mind)

Create a new folder `repository` located under the `.m2` folder. The default path is:

```
C:\Documents and Settings\<your login name>\.m2
```

3. Install the Maven2 Plugin

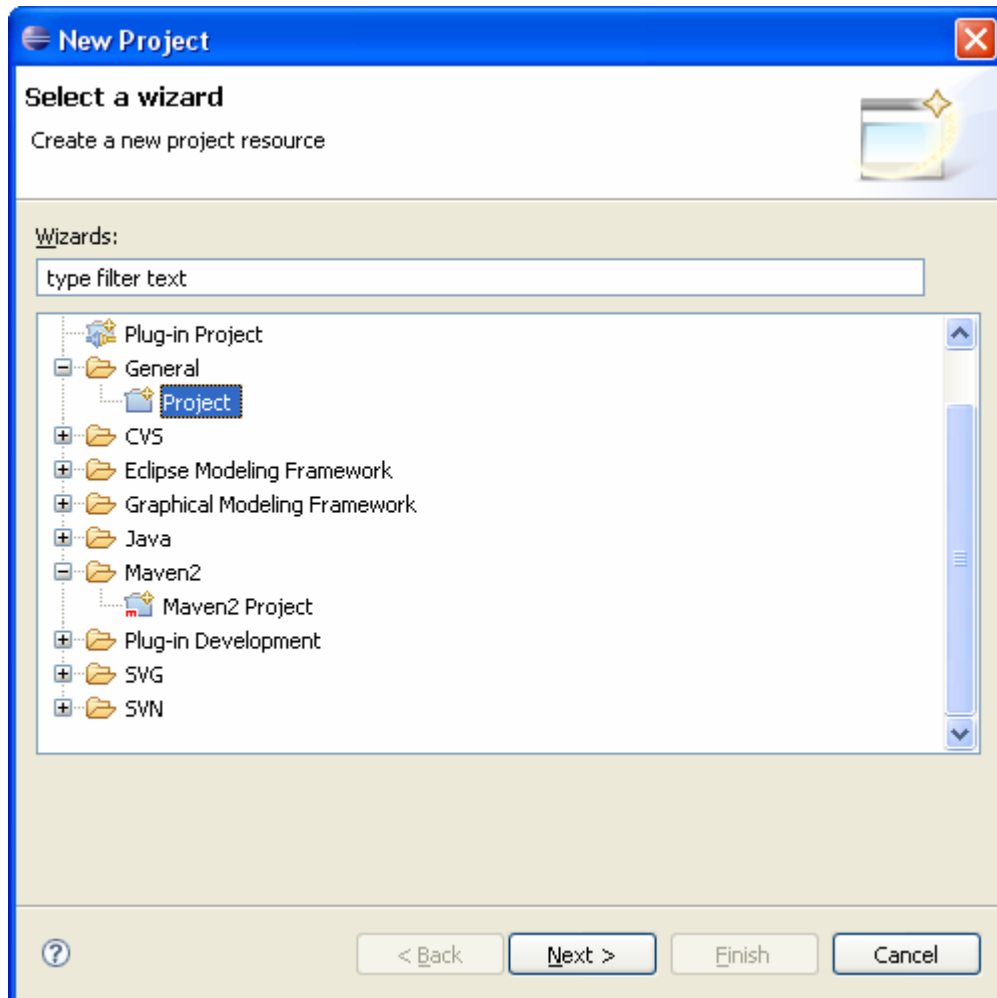
Eclipse->Help->Software Updates->Find and Install-> Search for new Features to install->new remote site

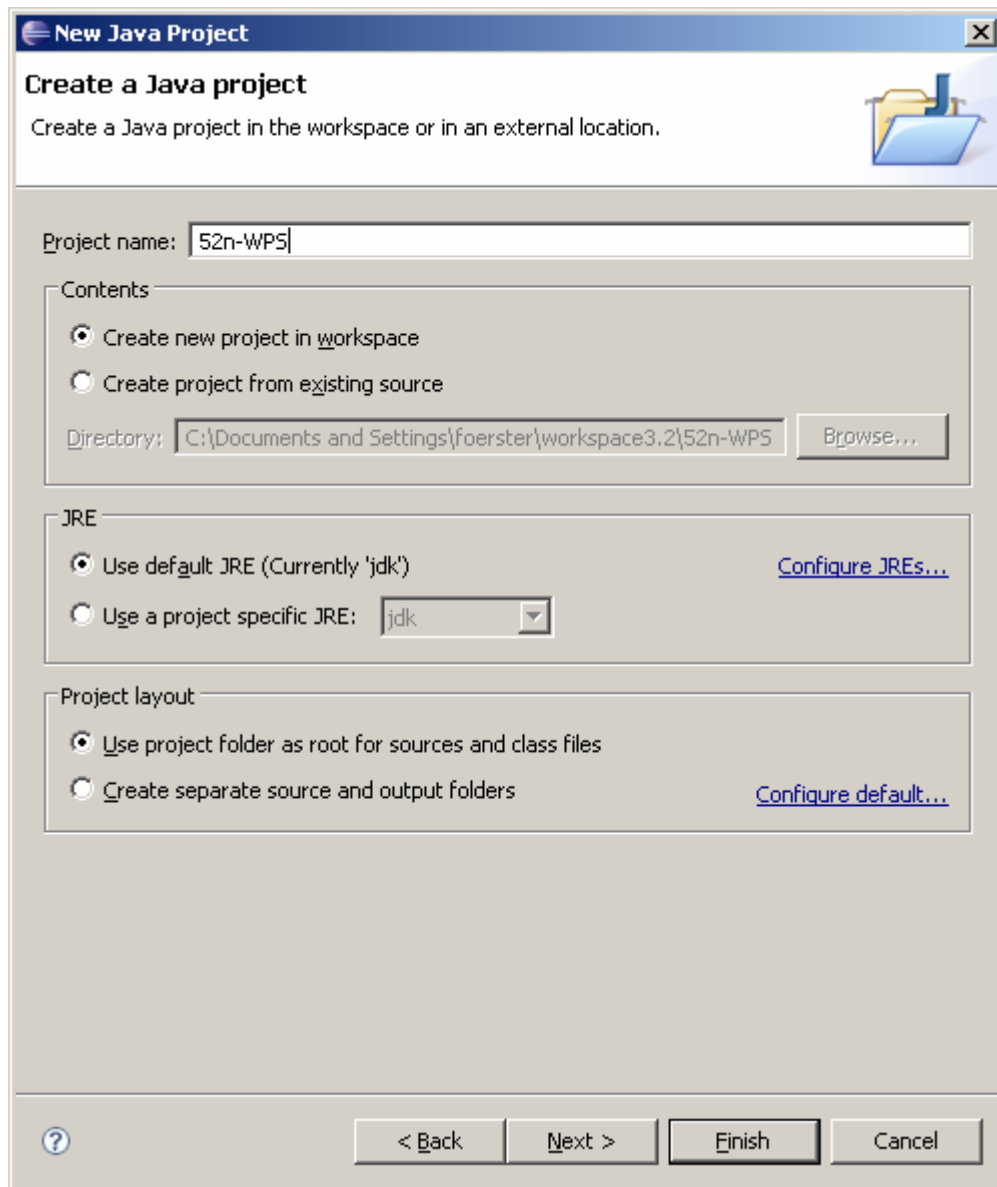
Enter `http://m2eclipse.codehaus.org/update` as the update URL.

4. Get the source from the 52North CVS
Eclipse->File->Import

Use the following URL:

`pserver:anonymous@core-52n.cvs.sourceforge.net:/cvsroot/core-52n`





5. Setting the project as an Maven2 Project

Go to Windows->Preferences->Java->Build Path

->Classpath Variables->New

Set:

Name: M2_REPO

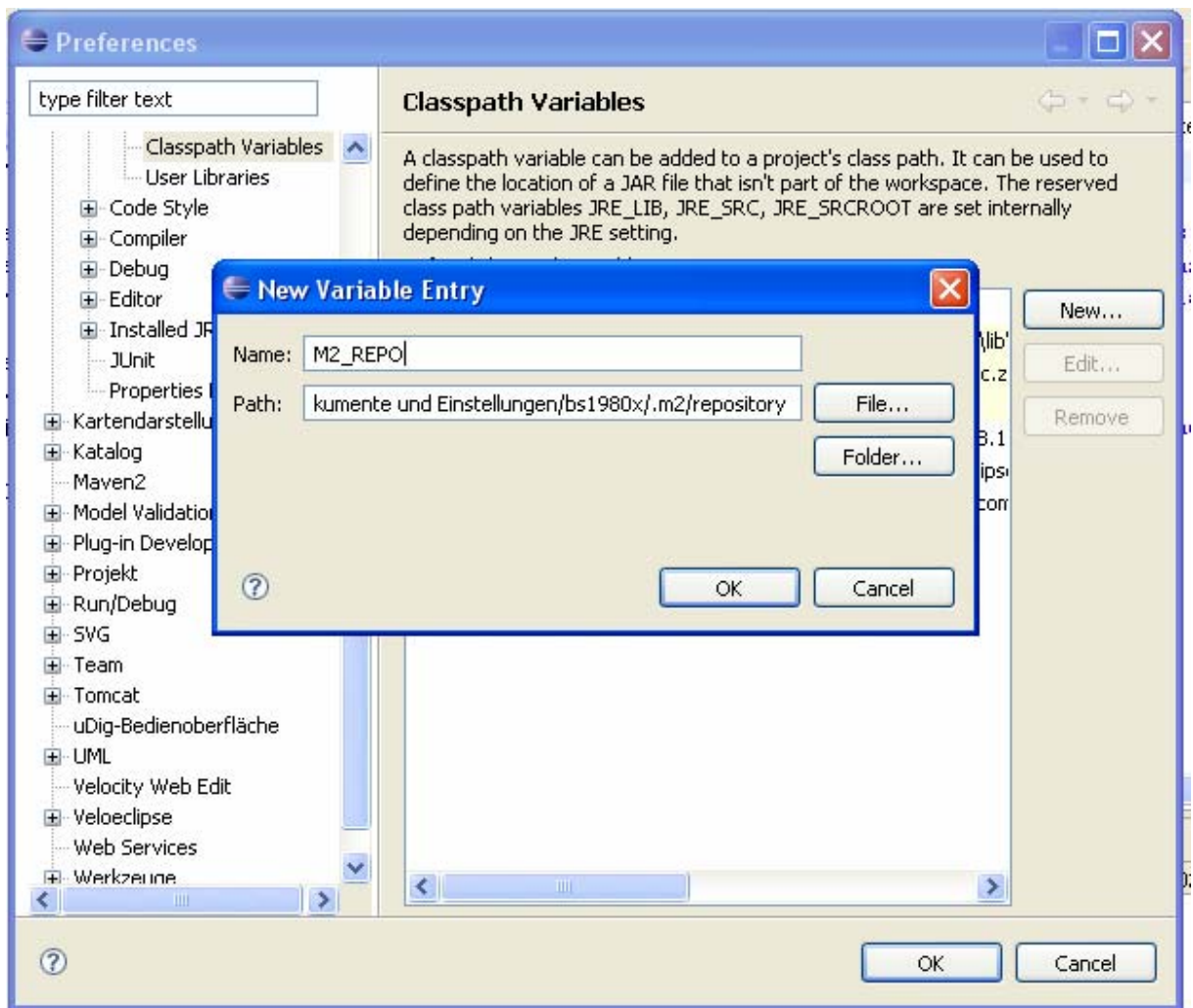
Path: A path pointing to your maven repository

The default location is:

C:\Documents and Settings\<your login name>\.m2\repository

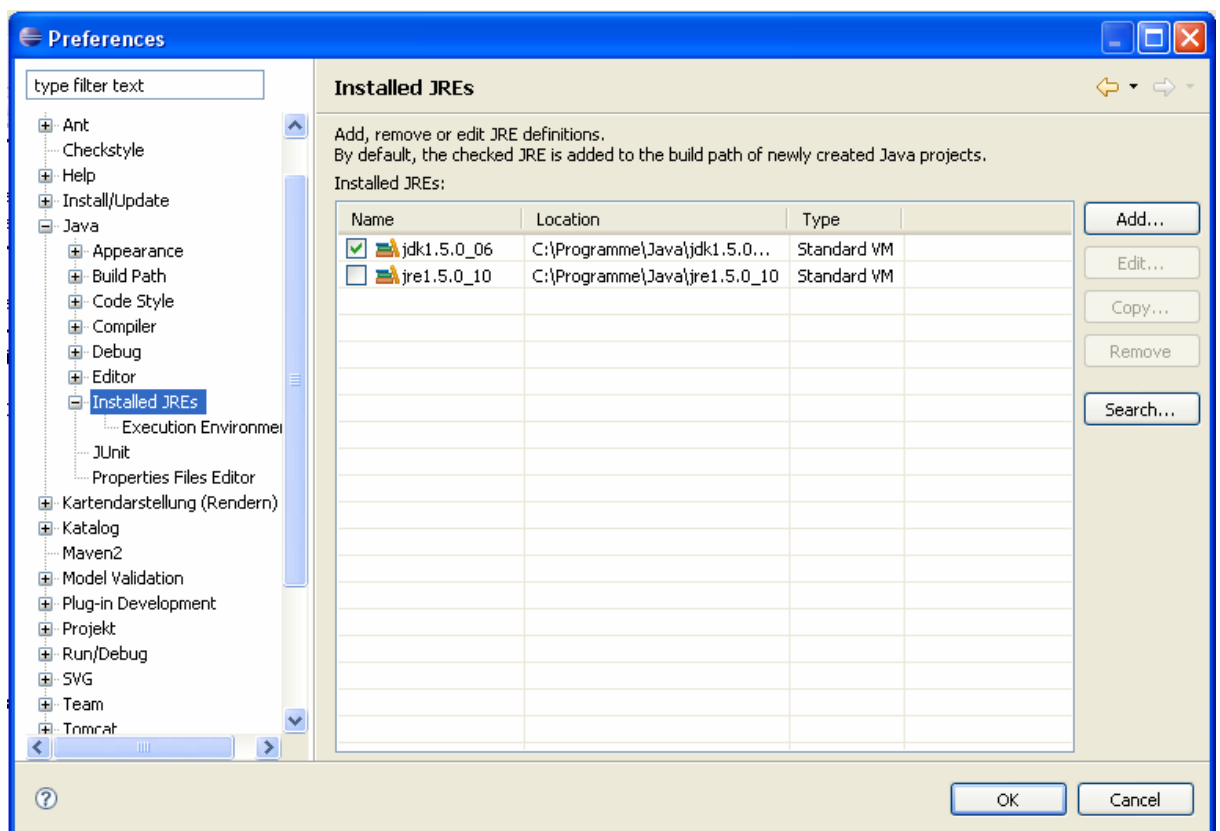


We strongly recommend to use the default repository path.
Eclipse does not seem to recognize any other repository path.



Go to Windows->Preferences->Java->Installed JREs

And make sure that you are using a JDK:



Edit the `settings.xml` from your `conf` folder located under the maven install folder.

Add the following tags:

Under the `<settings>` tag

```
<localRepository>
  C:\Documents and Settings\<your login
  name>\.m2\repository
</localRepository>
```

and under the `<profiles>` tag

```
<profiles>
  <profile>
    <id>52n-start</id>
    <repositories>
      <repository>
        <id>n52-releases</id>
        <name>52n Releases</name>
        <url>http://incubator.52north.org/maven/maven-repo/releases</url>
        <releases>
          <enabled>true</enabled>
        </releases>
        <snapshots>
          <enabled>false</enabled>
        </snapshots>
      </repository>
      <repository>
        <id>geotools</id>
        <name>Geotools repository</name>
        <url>http://maven.geotools.fr/repository</url>
      </repository>
      <repository>
        <id>Refractions</id>
        <name>Refractions repository</name>
        <url>http://lists.refractions.net/m2</url>
      </repository>
    </repositories>
  </profile>
```

and under the `<settings>` tag

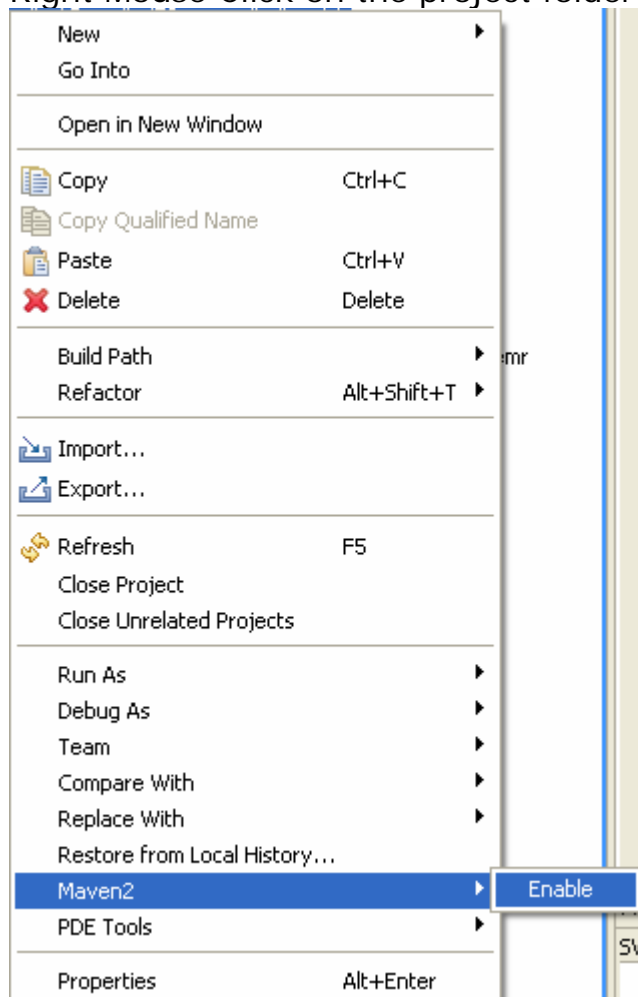
```
<activeProfiles>
  <activeProfile>52n-start</activeProfile>
</activeProfiles>
```

Go to the directory where your cvs checked out files are located. The root directory should contain a pom.xml.








Run `mvn eclipse:eclipse` in your bash in the root path of your WPS project, which should include now all the sources downloaded from the CVS.

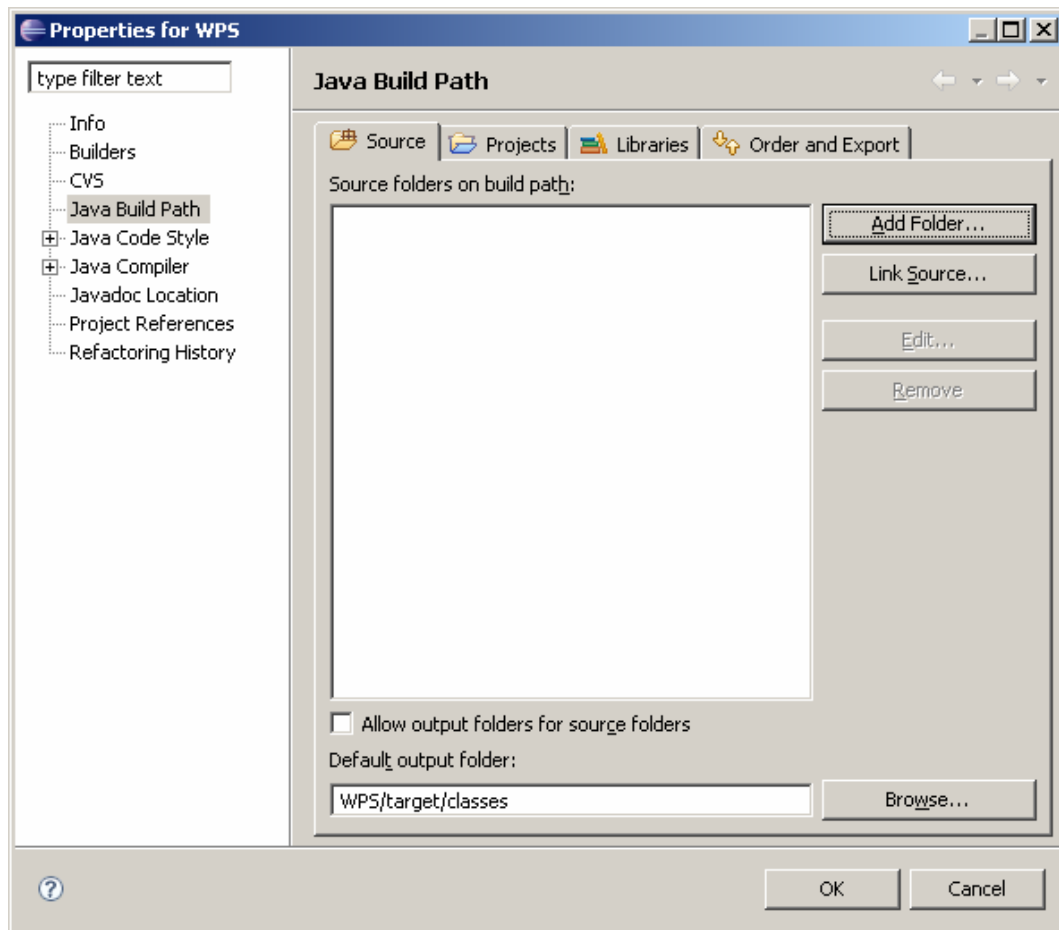
You may need to press F5 afterwards to force eclipse to recognize the generated classpath and project files.

Right Mouse Click on the project folder:



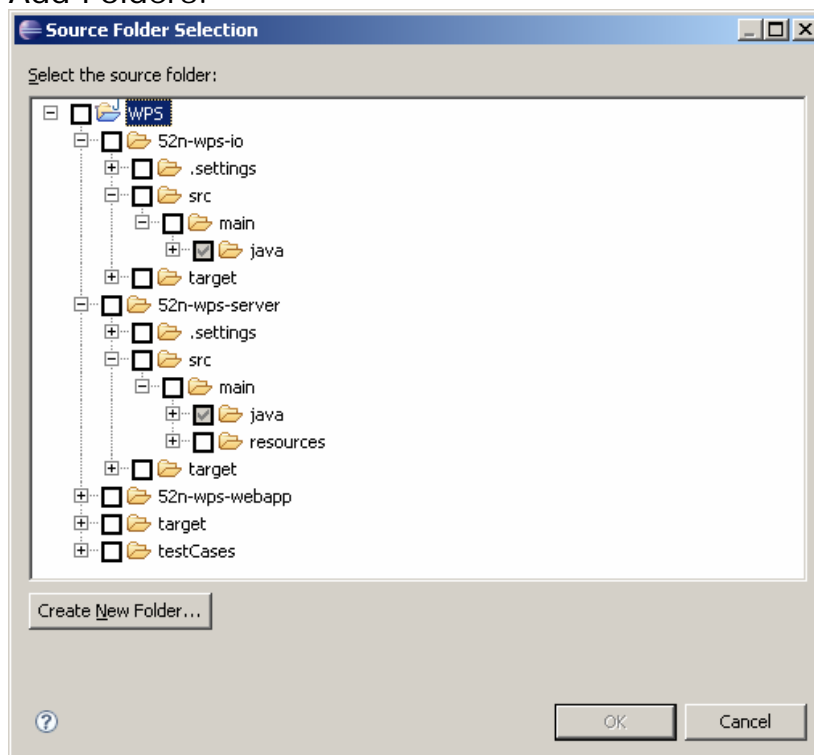
6. Set the source folders:
Right Mouse click on the project folder

New	▶
Go Into	
Open in New Window	
Open Type Hierarchy	F4
 Copy	Ctrl+C
 Copy Qualified Name	
 Paste	Ctrl+V
 Delete	Delete
Build Path	▶
Source	Alt+Shift+S ▶
Refactor	Alt+Shift+T ▶
 Import...	
 Export...	
 Refresh	F5
Close Project	
Close Unrelated Projects	
Run As	▶
Debug As	▶
Team	▶
Compare With	▶
Replace With	▶
Restore from Local History...	
UML	▶
Maven2	▶
PDE Tools	▶
Properties	Alt+Enter



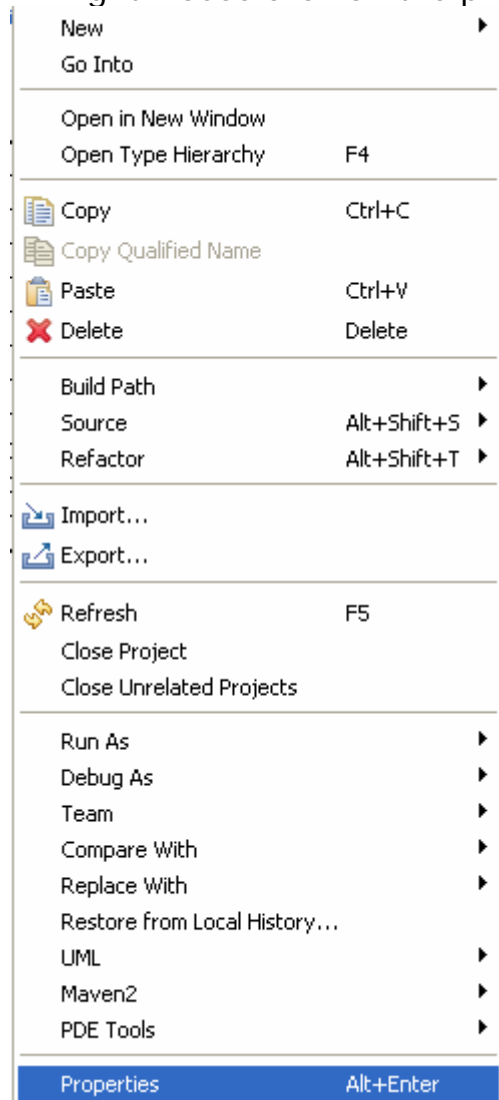
Remove all source folders

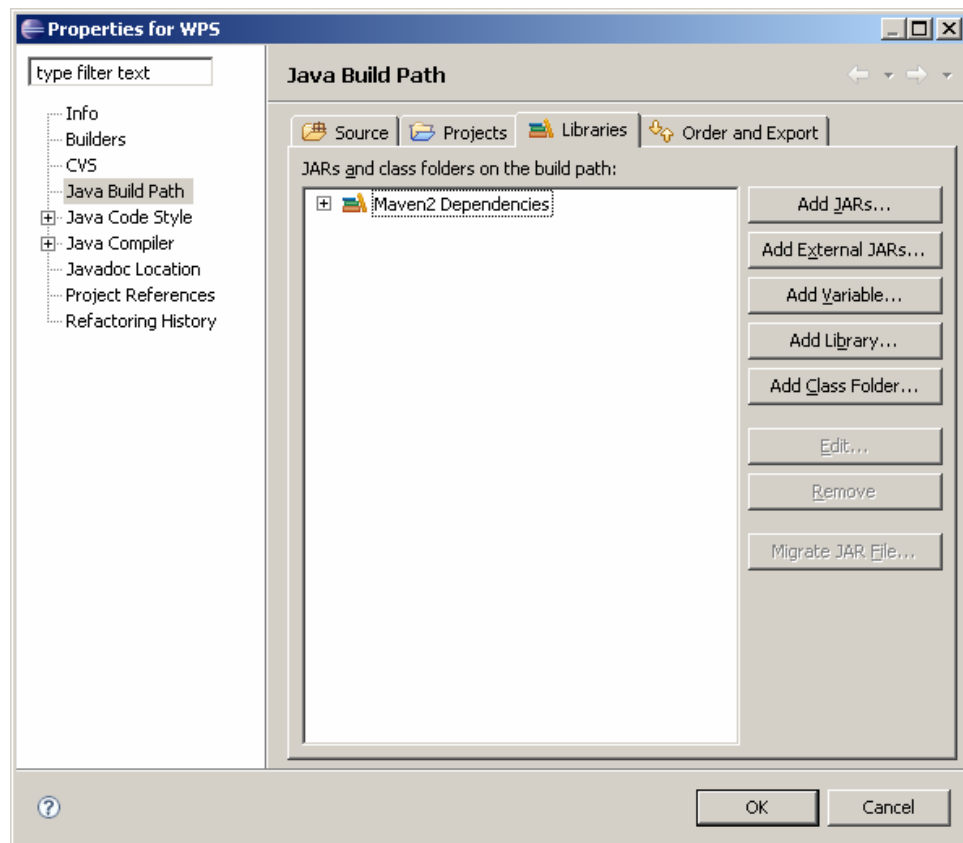
Add Folders:



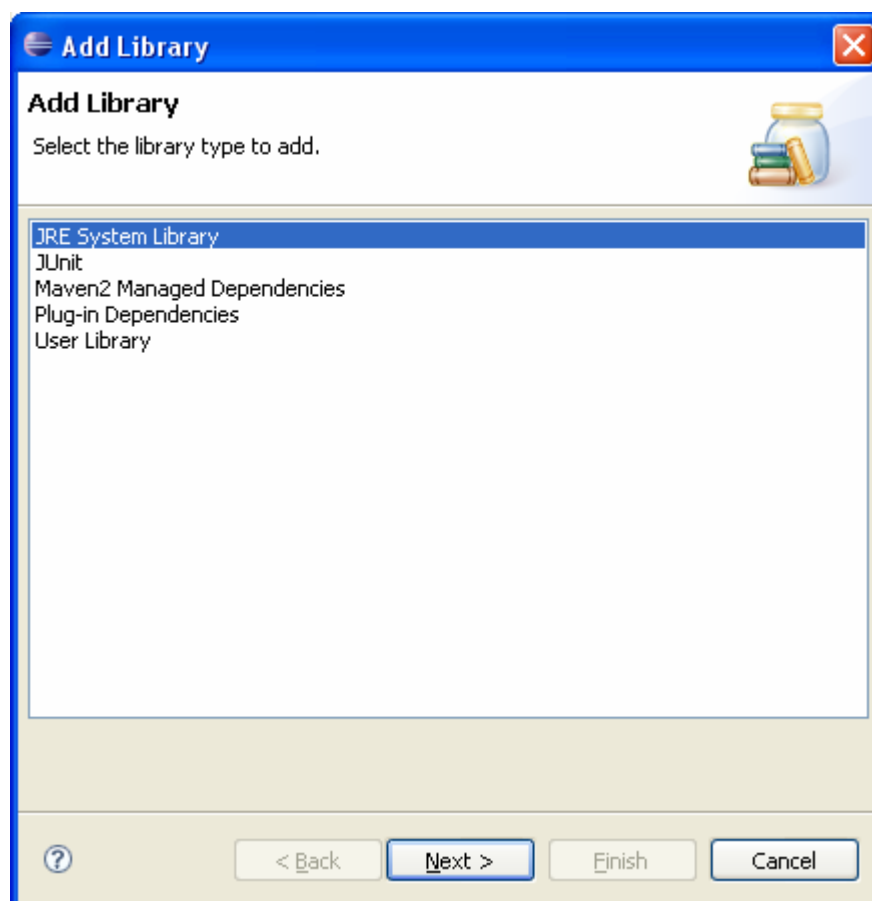
7. Setup Build Path

Right Mouse click on the project folder





Click Add Library



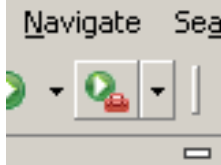
Accept the defaults.

Make also sure that your Environmental Variables

JAVA_HOME is set and the PATH variable point to your java SDK NOT the JRE

8. Compile

Go to Run->External Tools->External Tools

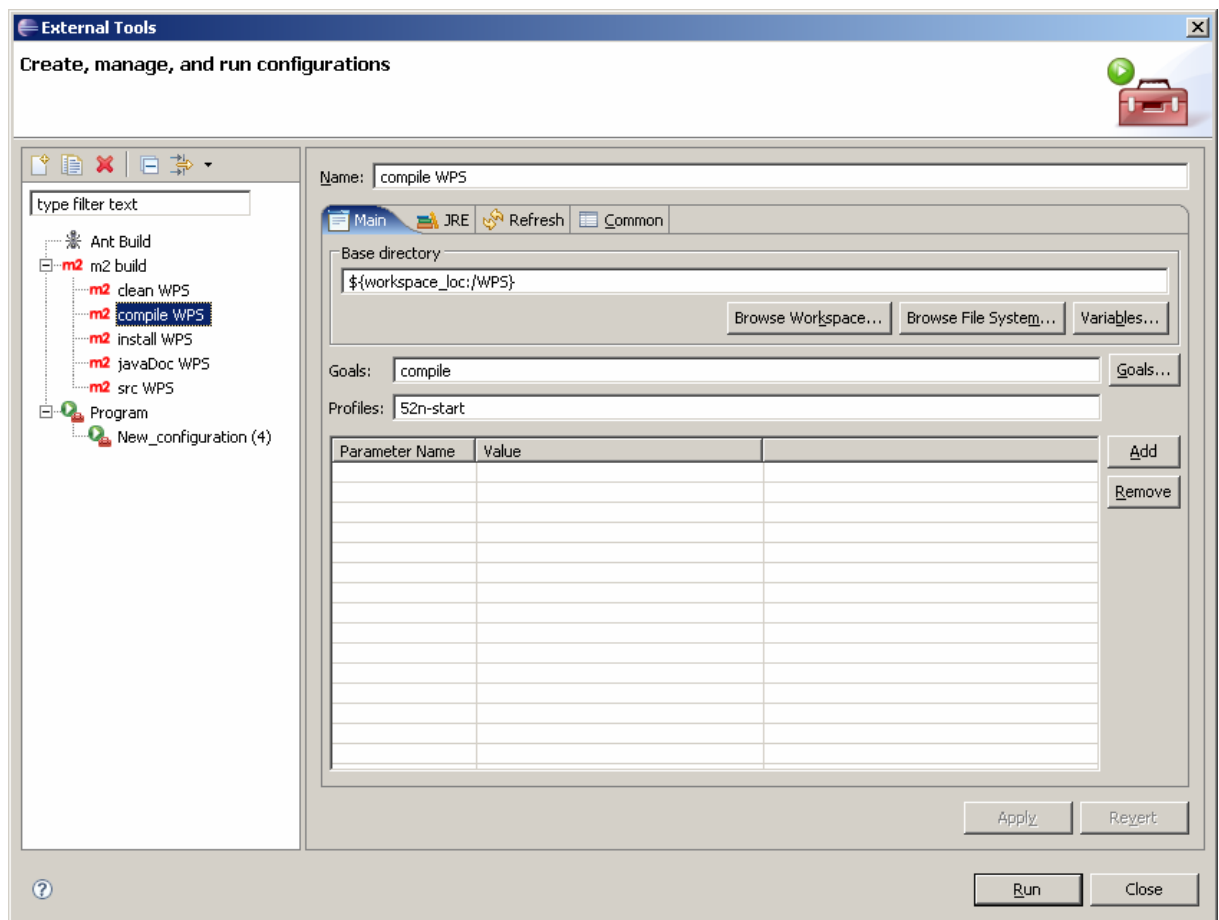


set up a new m2 build.

Base Directory: WPS

Goals: compile

Profiles: 52n-start



click run.

9. Get missing libraries

For some reason, maven cannot always fetch all required libraries. The compile report gives you some information, which libraries are missing.

11. Compile again.