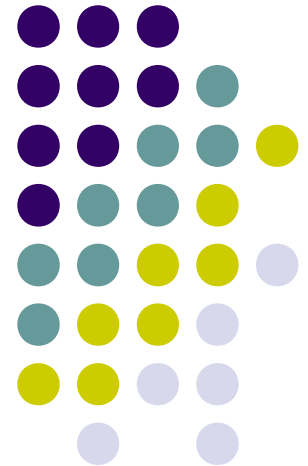
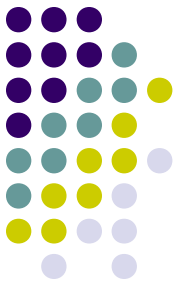


Task C: Application Development

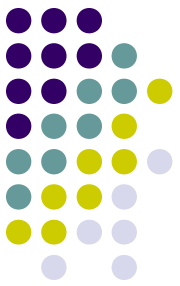
Volker von Nathusius
Denise Paradowski
Lena Wickenkamp



Use Case

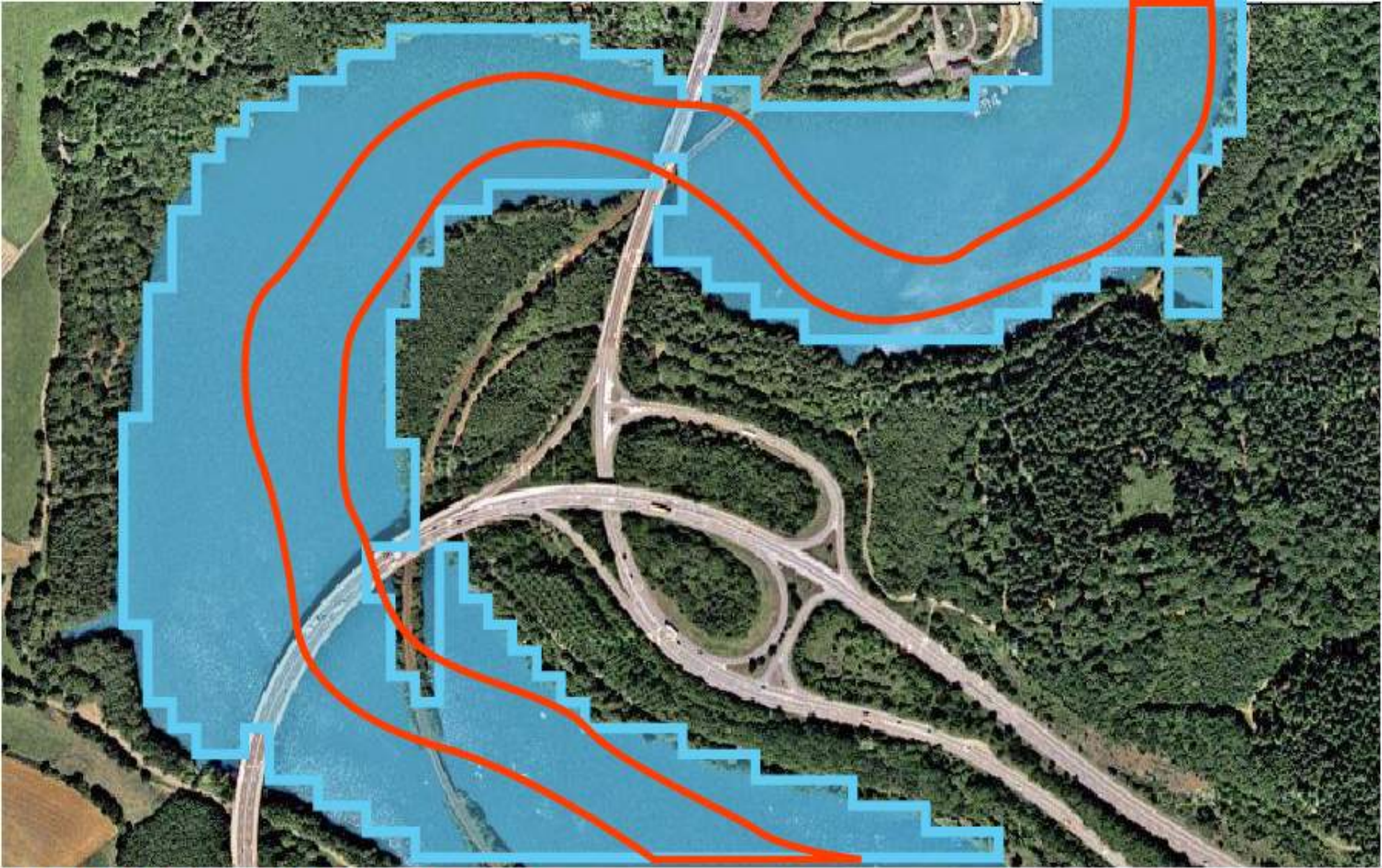


- Development of a web GIS application for comparison of current to regular waterbody dimensions
- Comparison of two different web service infrastructures: Mapbender vs. Open Layers



Features

- Display an 80% transparent WMS showing current GEONETCast satellite imagery
- Display a WFS: pre-processed GEONETCast data showing only current waterbodies
- Display an external WMS showing regular waterbody dimensions
- Common web GIS functionalities (zoom, pan, global view, measurement tool, layer switcher)



- WMS: Normal Water boundary**
- WFS: Preprocessed current boundary**
- WMS: Current satellite imagery**



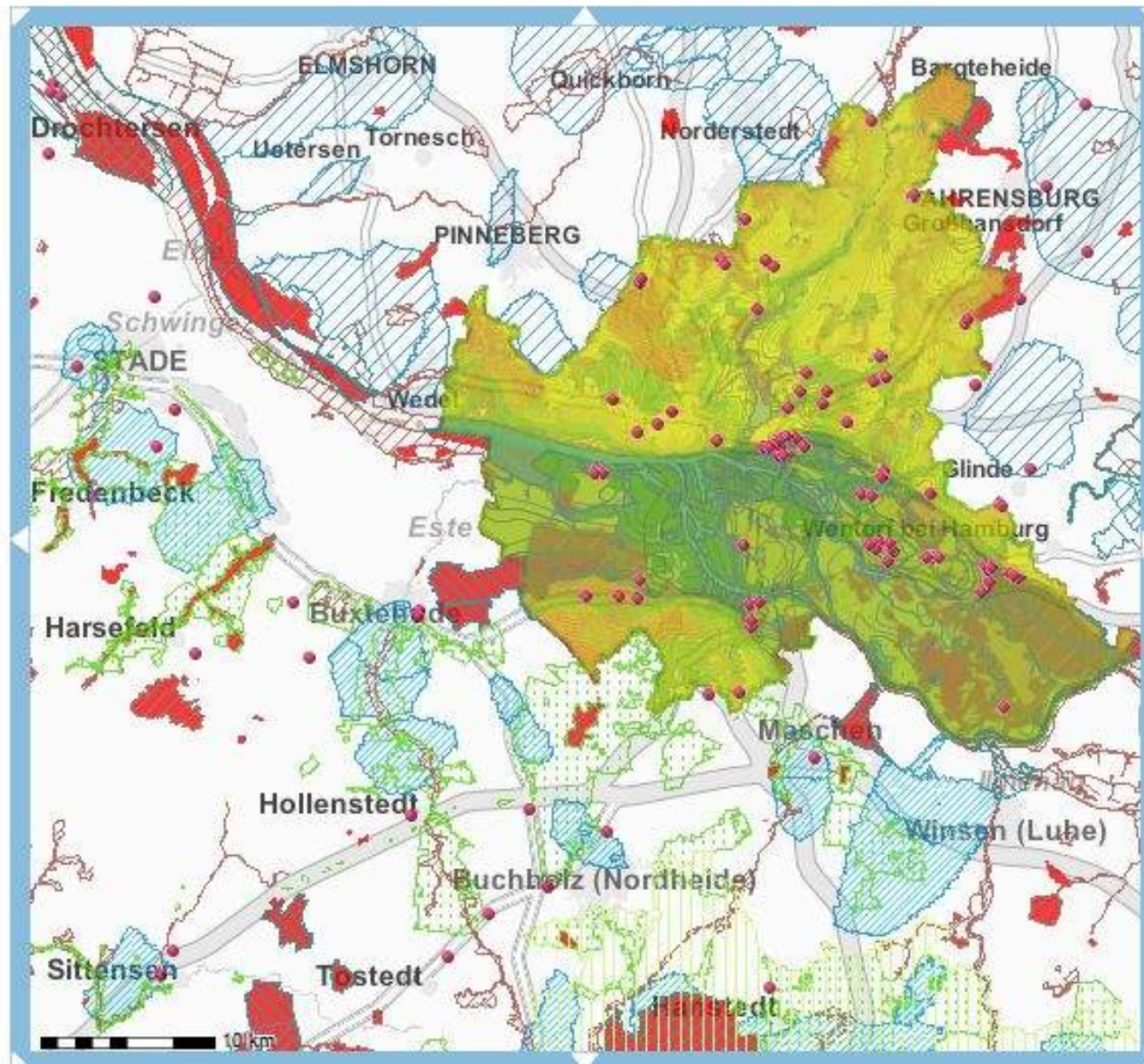
1 : 328594



Karten



- Hintergrundkarten
- Themen
- Schutzgebiete
- Raumordnung
- Regionalplanung Schles
- Regionales Raumordn
- Bebauungsplanumringe
- Grundwasserschutz Han
- Tourismus
- Bildung
- Gewerbeflaechen

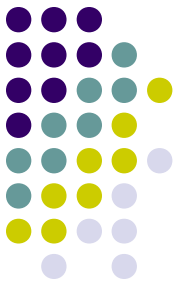


Legende

Adresssuche

[zur erweiterten Ansicht](#)

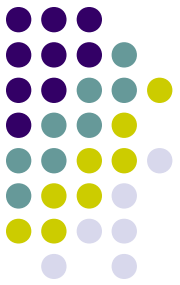
[Impressum](#) | [Copyright](#) | [Links](#)



Required Software

- Mapbender, Open Layers
- Apache Webserver
- PHP
- MySQL

Work packages



	student 1	student 2	student 3
fixed dates	12	12	12
project management	17	17	17
reports, documentation	27	27	27
installation and configuration	48	8	38
GUI	6	26	26
embedding WMS and WFS	40	60	30
total working hours	150	150	152